



ABBEVILLE ESTATE

THE COMMON

Plated Wedding

THE
GREAT
CATERING
CO.

Congratulations!

Your wedding day marks one of your life's most pivotal and cherished milestones. We trust you have dedicated some time to bask in the joy and significance of commencing this new chapter together.

We extend our gratitude for considering Abbeville Estate as the venue for your special day. Weddings hold a special place in our hearts and we feel privileged to be a part of such a memorable and joyous celebration!

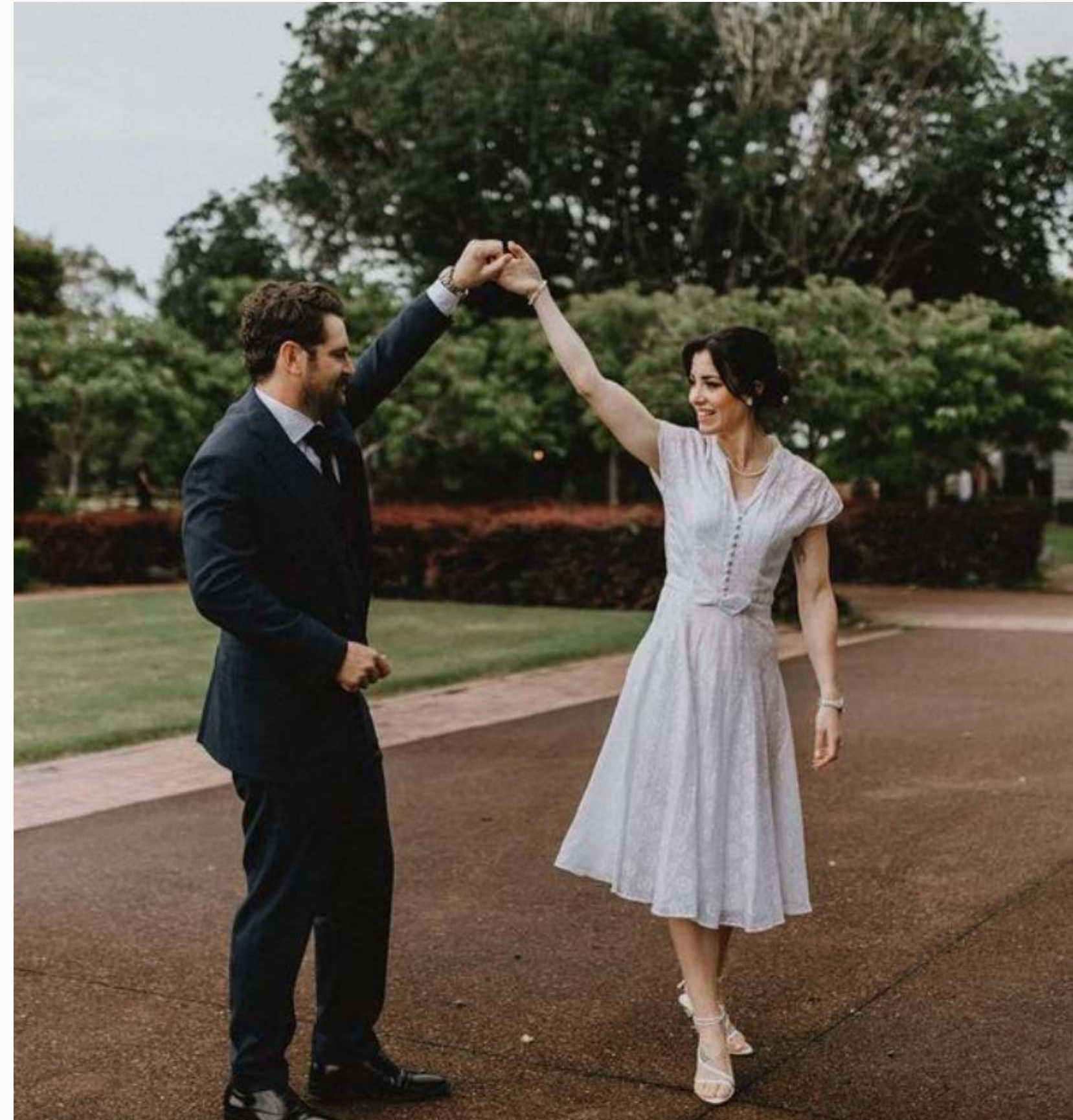
As you peruse this wedding kit, we hope it resonates, inspiring the desire to take the next step - arranging a viewing with us at the estate. We would be delighted to guide you through our venue and explore the possibilities Abbeville Estate offers for your special day.

Telephone: +64 9 376 1424

E-mail:

sales@greatcatering.co.nz

www.abbeville.co.nz



Wedding Kit

THE ESTATE

Concealed from prying eyes, Abbeville Estate is Auckland's boutique destination for weddings.

Surrounded by trees and landscaped grounds, our restored heritage-listed buildings offer a unique setting for your event. The historic Church, Barn, and Homestead are nestled on 11 hectares of farmland, provide a peaceful and private atmosphere, whilst being conveniently located near Auckland Airport.

Built in 1854, the Homestead seats 80 in the main dining room. It's large doors lead to a Garden Room, doubling as a lounge space. For non-seated events, it can accommodate up to 250 guests. The Homestead provides a separate parlour as a private preparation space for brides.

The Barn, an original part of the estate, exudes rustic charm with hewn timber frames and rustic flooring. It can host up to 200 guests for cocktails and seats up to 40. The landscaped grounds feature gardens surrounded by farmland and trees for privacy.

The Church, with stained glass panes and a warm native timber interior, is ideal for intimate ceremonies. Ceremonies can also take place amongst the landscaped grounds for an elegant setting for nuptials and mingling. Seating arrangements can be organised in the gardens or under a marquee on the lawn.



The Journey

1. ENQUIRE

Get in touch! We'll discuss pricing specific to your needs and check our availability to see if we have your preferred options available.

We can hold your date for seven days or until someone else is interested, allowing you some time to arrange a viewing and explore your options.

3. CONFIRM

To lock in your date, we will require a deposit payment to secure it.

5. THE DETAILS

We'll create a run sheet to ensure we have all of the details in one place and we are all on the same page.

We can organise a wedding rehearsal the day prior if we have the availability.

2. VIEW

The best way to really get a feel for the property is to arrange a viewing with us.

Walk through the gardens and explore the opportunities with one of our event managers to see just how many options there are for your big day!

4. PLANNING

The fun part! Now that you've got the date and venue - the planning can really begin. We'll be here to walk you through the process.

We also have a list of fabulous suppliers we know and trust -you'll love working with!

6. GET MARRIED!

Leave the rest to us and enjoy your day!

OUR
Spaces

Abbeville Estate stands out with its diverse spaces, offering endless options for a unique and memorable celebration.



The Barn



The Homestead



The Church

THE Barn

An original part of the Homestead, the Barn offers an authentic and rustic air to any event. The hewn timber frames speak of over 150 years of history.

The Barn can comfortably accommodate up to 200 guests for cocktails. It can also be set up to seat up to 40 inside and makes for a beautiful rustic indoor ceremony option.

Many of our guests choose to use The Barn for the dancing part of the evening.



THE Homestead

Built in 1854, the Homestead seats 80 in its main dining room.

Its large doors lead to a Garden Room, doubling as a lounge space. For non-seated events, it can accommodate up to 250 guests. The Homestead provides a separate parlour as a private preparation space for brides.



THE Church

The Church, with stained glass panes and a warm native timber interior, is ideal for intimate ceremonies.

Ceremonies can also take place amongst the landscaped grounds for an elegant setting for nuptials and mingling. Seating arrangements can be organised in the gardens or under a marquee on the lawn.



Ceremony Options



WESTNEY HOMESTEAD

A gorgeous building to shape the backdrop for your ceremony or post-ceremony drinks and nibbles.



THE CHURCH

After 150 years of faithful service to Mangere and Onehunga, the Chapel was relocated from its old home a short distance to Abbeville Estate. The Chapel has been carefully restored to celebrate its past. It's original timber pews can seat up to 80.



THE GARDENS

Embrace the outdoors and get married beneath the beautiful trees that surround the property. Our manicured lawns make for the perfect summer setting.



THE BARN

For a more rustic feel, The Barn is perfect for ceremonies and/or receptions. Many of our guests choose to use The Barn for the dancing part of the evening.

OUTDOOR MARQUEE

There is no limit to the number that can be accommodated in the gardens. Seating can also be organised, whether open air or on the lawn under a marquee.

THE
GREAT
CATERING
CO.

Food & Beverage

Abbeville Estate is run exclusively by
The Great Catering Co.

We have proudly delivered excellent
catering and seriously delicious food for
over twenty years. Now, we're pushing the
boundaries of expectation, flexing a little
muscle, and turning our talents towards
innovative concepts and creative
executions.

From street-style bites, boards, bowls, and
boxes to perfectly presented plates and
cocktails, we'll inspire you to test your taste
buds and savour the unexpected.

Let us cater to your senses - you'll love
every bite.

An Example Menu

Canapes

Beef carpaccio, tarragon, horseradish, agria crisp (GF)
Crispy buttermilk fried Chicken with sriracha mayo
Wild mushroom croquette, soft herbs, black garlic, chive aioli (V)

Breads

'Daily Bread' Rosemary and Sea Salt Focaccia with Extra Virgin Olive Oil
GF bread available on request

Entrees

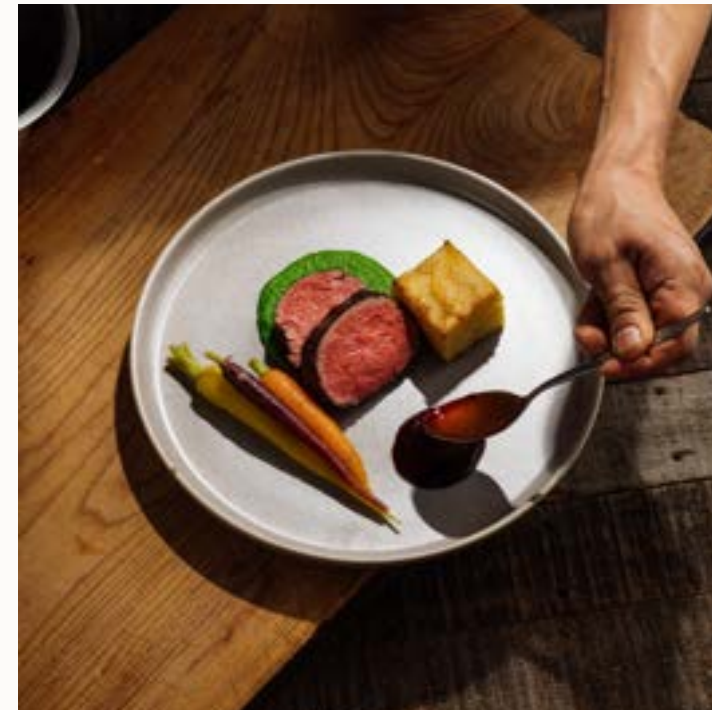
Tuna tartare, chilli, ginger, sesame, tostada chips
Teriyaki glazed tofu, pickled cucumber, wakame, ginger, chilli, sesame
dressing (GF/VE)

Mains

Lamb cutlet, crispy lamb belly, pickled cucumber, crushed new potatoes,
pea, asparagus and broad bean salad
*Mediterranean pithivier, seasonal vegetables and roasted red pepper
sauce (V)*

Dessert

Your own wedding cake served on platters or to a station





Food & Beverage

BEVERAGE OPTIONS

Abbeville Estate is one of very few Auckland venues that offer BYO beverages.

You provide it, we'll service it.
Alternatively, we can also offer:

- Bar tab
- Beverage packages

COCKTAILS

We love creating unique and vibrant cocktails for our events. Speak to us about your favourite cocktails to see if we can create a delicious options for your guests!

WHAT OUR CLIENTS SAY

"Such a wonderful place where the service and food are second to none! Thank you Abbeville & The Great Catering company for the wonderful experience at Holly & Dale's wedding and for the great care towards the guests"

"Stunning setting with super-friendly and professional people to help make your day special. The team made every effort to ensure our day went smoothly and they were so easy to deal with. Highly recommend Abbeville Estate if you are looking for a beautifully presented venue, professional team and delicious food"

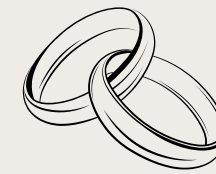
"We had our wedding here in November 2019 and had an amazing day. We got married in the church, had canapés in the courtyard, dinner in the homestead and dancing in the barn. So many great places for photos even in terrible weather (we had rain and wind). And the food was delicious!!! We had so many great comments about the dishes we choose. The staff both in the lead up to and on the wedding day were super helpful and accommodating and they pack everything up for you so the morning pack down is easy and quick. Would highly recommend this venue!"

A typical day at Abbeville Estate



4.00pm
Guests arrive

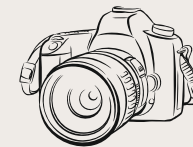
4.30-5.00pm
Ceremony



5.00pm
Drinks & canapes served



5.15pm
Group & family photos
& bridal party photoshoot



6.00pm
Guests invited inside to
find their seats

6:30pm
Guests move into dining room
MC welcome speech & bridal
party introduction

7.00pm
Dinner served

8.30pm
Cake cutting



8.35pm
Speeches made
followed by dessert



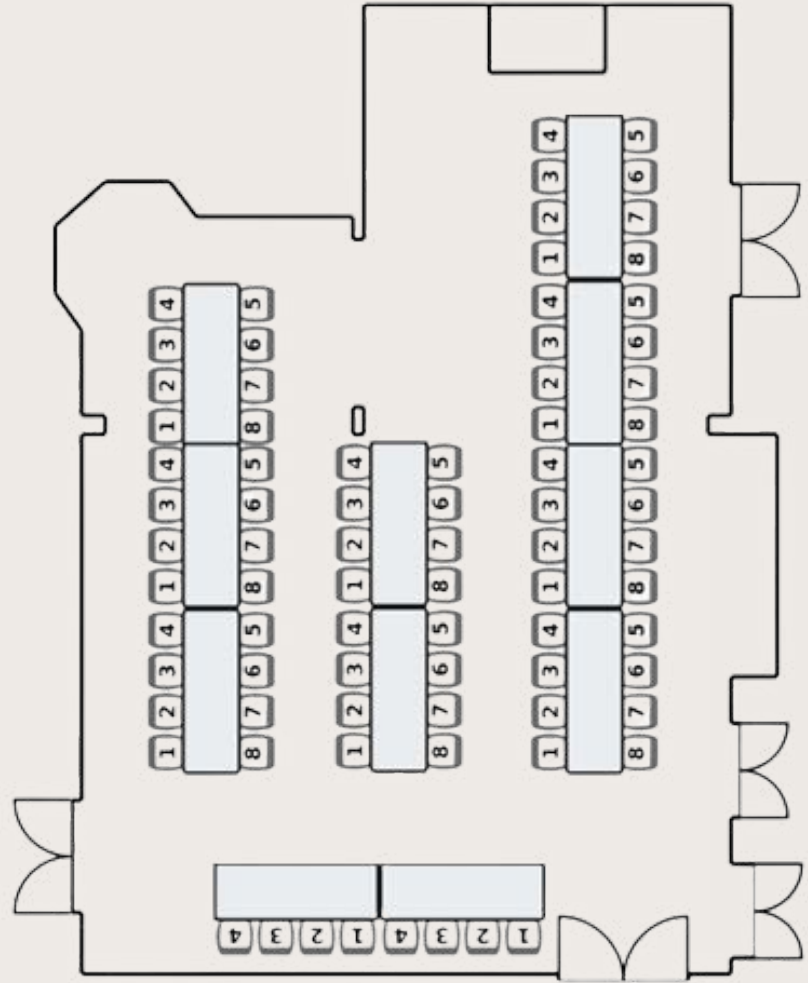
9.30pm
First dance followed by
party!



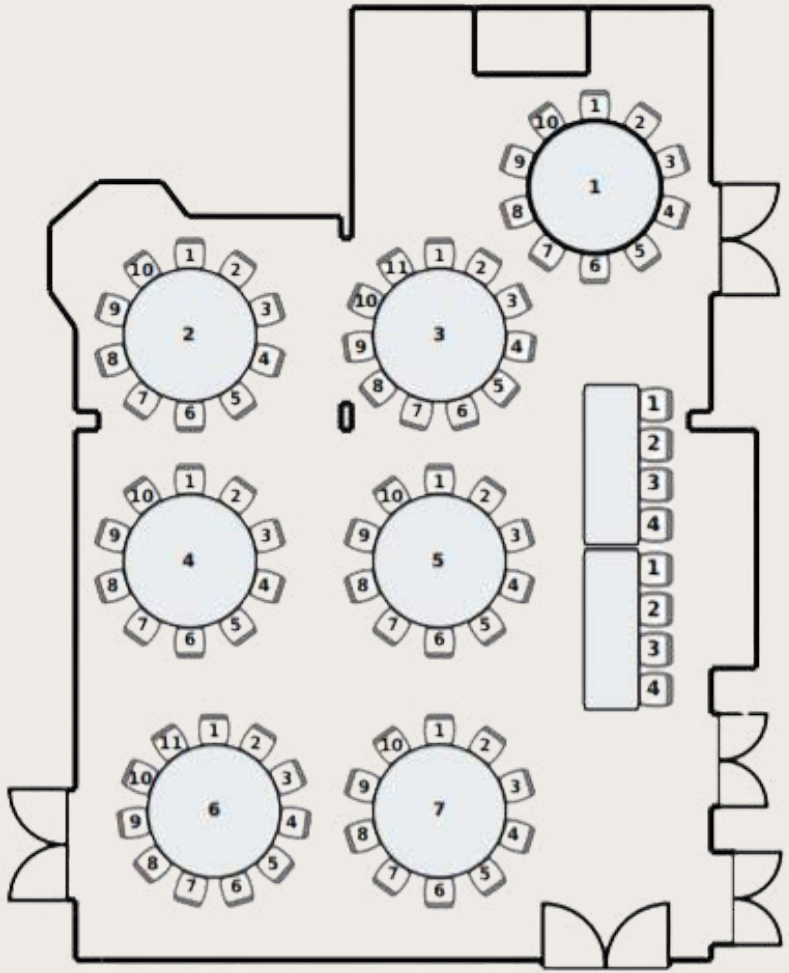
11:30pm - 12am
Bar closes guests depart



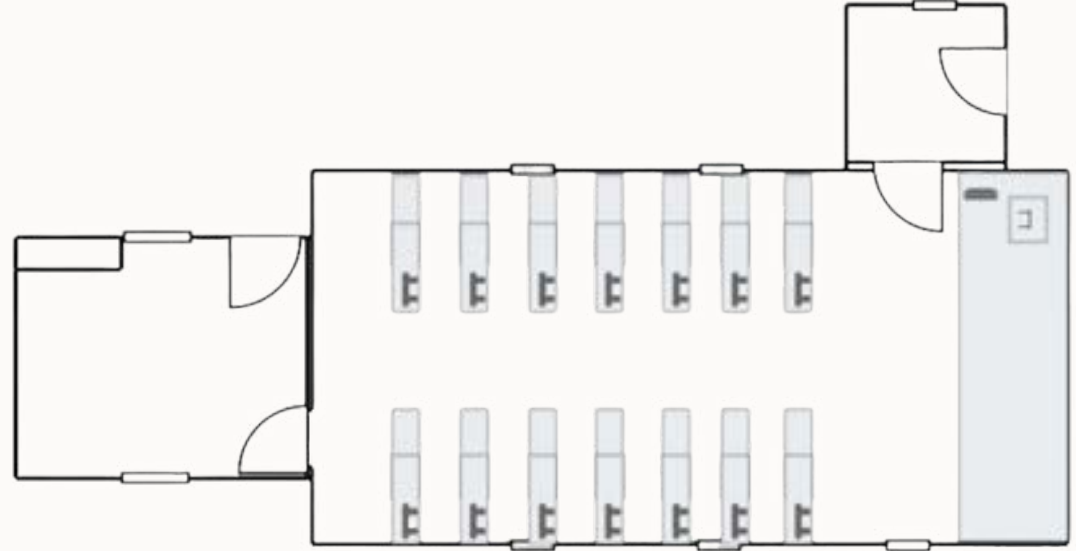
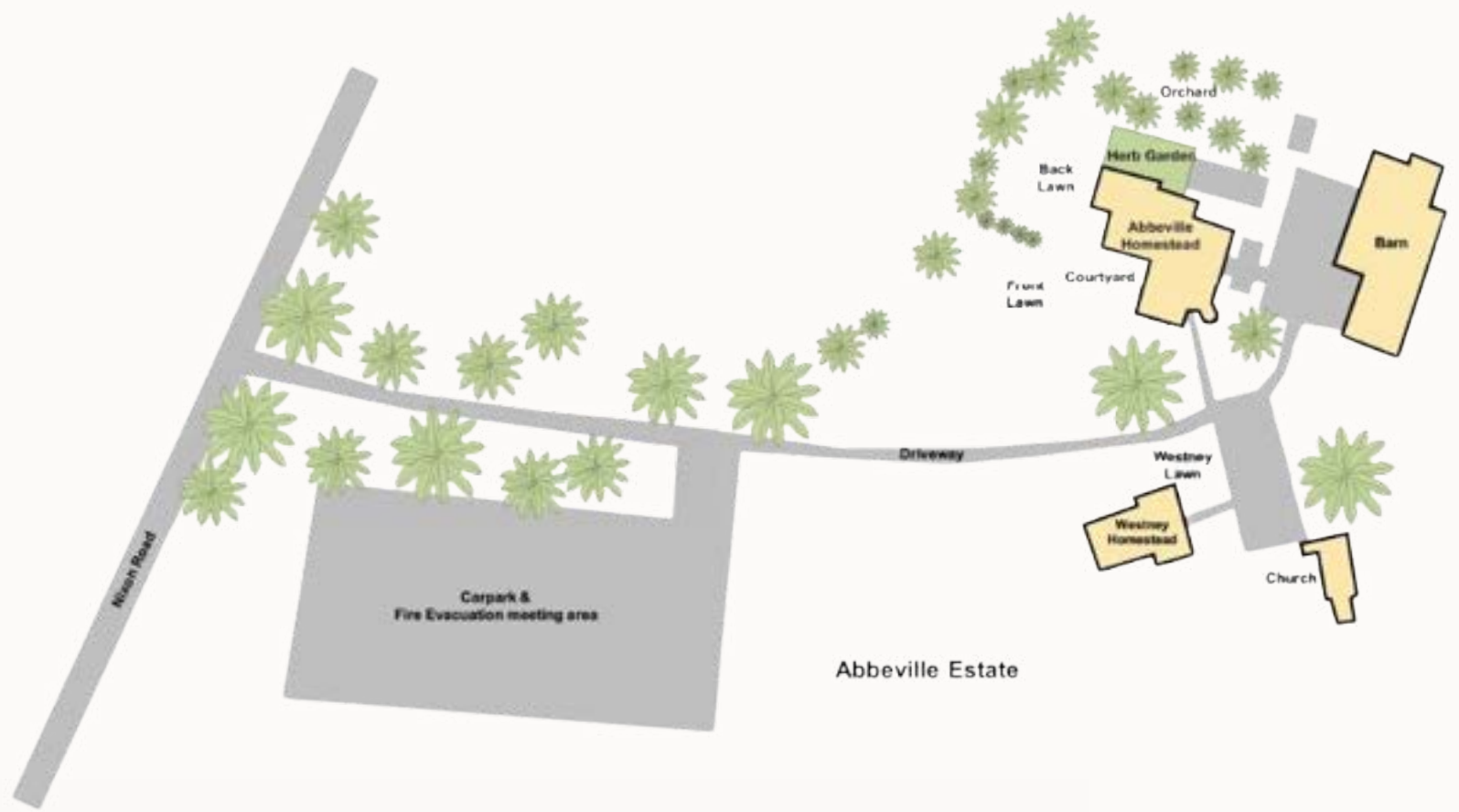
Site Layout & Floorplan Examples



80 PAX LONG TABLES



80 PAX ROUND TABLES



CHURCH 80 PAX

Wedding Packages

PACKAGE INCLUSIONS

MENU

Canapés - 3 per person
2 Course Menu - Bread, Entrée, Main

BEVERAGE

Charged on consumption
BYO (additional @ \$25pp)

STAFFING

Wedding planner & admin*
Duty Manager, waitstaff & barstaff
Setup & pack out staff
Chefs & kitchenhand
Security (Compulsory)
Estimate only - Actual hours charged post-event

EQUIPMENT

Bar trestles, linen napkins, and cross-back chairs
Bar and serving equipment, ice, glassware, crockery, cutlery and kitchen equipment.
Rubbish collection and cleaning.

PACKAGE RATES

80+ guests \$200.00 + GST
60 guests \$220.00 + GST
40 guests \$255.00 +GST

*Wedding planner – inclusive of 4 h and 2 site visits

Here at Abbeville, we like to tailor our proposals to suit you and your day, but we do understand you may just want to get an idea of everything!

VENUE HIRE RATES

ENTIRE HOMESTEAD	\$3500.00
THE HOMESTEAD	\$2750.00
THE BARN	\$1500.00
THE CHURCH	\$750.00

** PRICES ARE EXCLUSIVE OF GST*

**ADDITIONAL TO PACKAGE RATES*

ADDITIONAL ITEMS

- BYO Beverages \$25.00 pp
- Choice of main course \$18.00 pp
- Additional canapes POA
- Choice of linen POA





Contact

Telephone: +64 9 376 1424
E-mail:
sales@greatcatering.co.nz
www.abbeville.co.nz

9 Uenuku Way
Auckland Airport Auckland,
New Zealand