



# ABBEVILLE ESTATE

THE COMMON

*Corporate Events*

THE  
GREAT  
CATERING  
CO.

# Corporate Events

## THE ESTATE

Concealed from even the most curiously inclined, Abbeville Estate is Auckland's boutique destination for all corporate events. Surrounded by trees and landscaped grounds, the beautifully restored heritage-listed buildings that make up the Estate offer you the opportunity to tailor the most productive day.

Our historic homestead is nestled within 11 hectares of rolling farmlands, ensuring that Abbeville remains peaceful and private yet surprisingly well-located with proximity to Auckland Airport and the CBD. Its proximity to Auckland Airport makes Abbeville Estate ideal for corporate events that bring together teams from across the country.

Nearby hotels offer accommodation for out-of-town visitors. The Homestead is wired for video and audio, and a built-in projector is available for booking.

A separate Garden Room can be used as a break-out space or opened up to create a single flowing space. The barn's rustic nature provides an uncommon environment for any corporate event, product launch, or fashion show or shoot.

Team-building activities are just a short walk from Abbeville Estate. They include a high-ropes confidence course, paintball, a golf course, and a driving range.



# Bespoke Quote

We have prepared a day delegate rate for your convenience, which you will find in the following pages. This is a simple starting point, and we will happily tailor something more suitable to you and your upcoming function!

Whether you are looking for a day meeting, dinner, cocktail function, or awards night, we would love to assist you in bringing your function to life in one of our versatile spaces. Get in touch with us to discuss the details of your next event, and we can offer you a full proposal to suit.

Thank you for getting in touch.

Telephone: +64 9 376 1424

E-mail:

[sales@greatcatering.co.nz](mailto:sales@greatcatering.co.nz)

[www.abbeville.co.nz](http://www.abbeville.co.nz)



# OUR Spaces

Abbeville Estate stands out with its diverse spaces, offering endless options for a unique and memorable event.



## The Barn

The Barn, an original Homestead feature, exudes rustic charm with its hewn timber frames dating back over 150 years. It can host up to 200 guests for cocktails or seat up to 40 indoors and makes for a great breakout space.



## The Homestead

The Homestead's main dining room, established in 1854, accommodates 80 guests. The Garden Room, also serving as a cocktail area, seats 20 and seamlessly connects to the dining room when doors are open. Additionally, a separate parlour offers private space for breakouts and meetings.

# Day Delegate Packages

## PACKAGE INCLUSIONS

### MENU

Morning tea  
 Boxed lunch  
 Afternoon tea

### BEVERAGES

All day tea and coffee

### STAFFING

Event coordinator  
 Admin Duty Manager and waitstaff  
 Setup and pack out staff  
 Security (for over 19 guests)

### EQUIPMENT

Venue setup -theatre, banquet, cabaret or classroom -including tables, chairs and linen.  
 Bar and serving equipment, ice  
 Glassware, crockery, cutlery, kitchen equipment  
 In-house AV, sound, screen and projector  
 WiFi  
 Rubbish collection and cleaning

## PACKAGE RATES

10 guests \$175.00  
 20 guests \$125.00  
 40 guests \$90.00  
 60 guests \$80.00

## VENUE HIRE

**10 PEOPLE**  
**40 PEOPLE**  
**60 PEOPLE**

## RATES

**\$POA**  
**\$POA**  
**\$POA**

## ADDITIONAL ITEMS

- BYO Beverages \$25.00 PP
- Wrap-up cocktail function \$POA
- Additional savoury item From \$8.00
- Additional sweet item \$6.00
- Sandwiches/wraps \$14.50
- Salads/Poke -Noodle Box/Bowl \$15.00
- Morning smoothie \$7.50
- Breakfast items From \$6.00
- Additional AV \$POA
- Whiteboard \$170.00

*\*Prices are exclusive of GST*

## VENUE EQUIPMENT

Discussing your audiovisual (AV) needs? We've got you covered! We can guide you to our trusted AV partners, Corporate AV Services, for all your AV requirements.



THE  
GREAT  
CATERING  
CO.

# Food & Beverage

Abbeville Estate is run exclusively by  
The Great Catering Co.

We have proudly delivered excellent  
catering and seriously delicious food for  
over twenty years. Now, we're pushing the  
boundaries of expectation, flexing a little  
muscle, and turning our talents towards  
innovative concepts and creative  
executions.

From street-style bites, boards, bowls, and  
boxes to perfectly presented plates and  
cocktails, we'll inspire you to test your taste  
buds and savour the unexpected.

Let us cater to your senses - you'll love  
every bite.

## An Example Menu

### **Morning Tea**

Four cheese, caramelised onion and chive scones w/ butter

### **Boxed Lunch**

#### **French**

Dijon roasted organic chicken, brie, mescaline lettuce and truffle aioli  
Salad nicoise (GF)  
Chocolate marquise with candied orange (GF)

#### **Italiano**

Ciabatta roll, Parma ham, parmesan, Roma tomato and arugula  
Panzanella salad, tomato, pickled shallots, olives, basil and toasted  
focaccia croutons  
Canelones

#### **Special Diet -(V/V/GF/DF)**

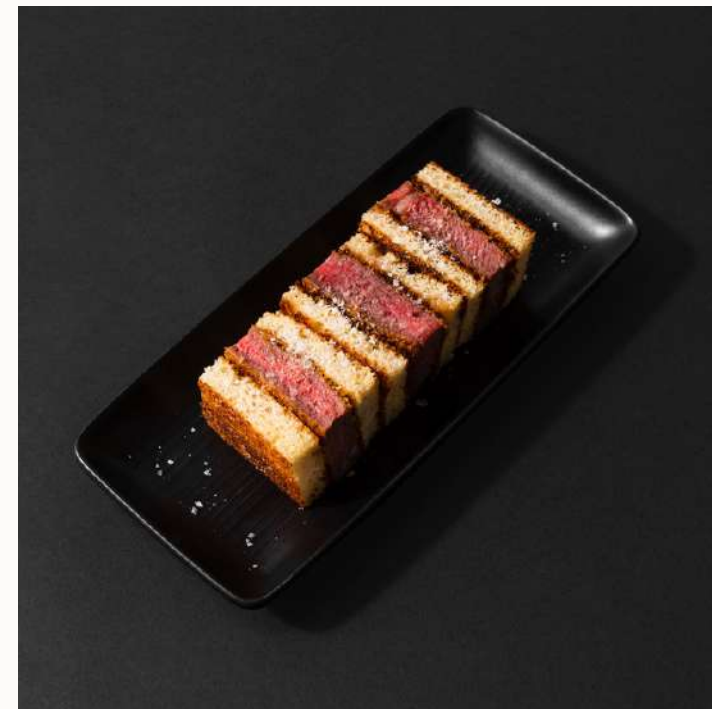
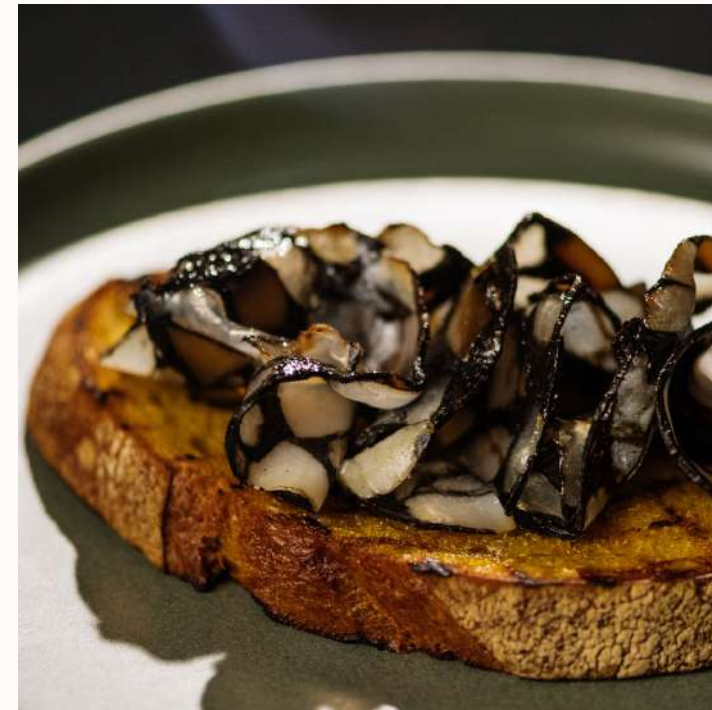
Vietnamese rice Paper, smoked tofu, coriander, shredded napa,  
cucumber and mint  
Raw salad, cauliflower, courgettes, carrots, raisins, sunflower seeds.  
Raw cranberry and almond energy slice

#### **Afternoon Tea**

Salted caramel brownie (GF)

#### **All Day Tea and Coffee**

A selection of herbal teas & filter coffee



THE  
GREAT  
CATERING  
CO.



# Food & Beverage

## BEVERAGE OPTIONS

Abbeville Estate is one of very few Auckland venues that offer BYO beverages.

You provide it, we'll service it.  
Alternatively, we can also offer:

- Bar tab
- Beverage packages

## COCKTAILS

We love creating unique and vibrant cocktails for our events. Speak to us about your favourite cocktails to see if we can create a delicious options for your guests!

## WHAT OUR CLIENTS SAY

"Absolutely fantastic help and service from the start. Jess was great to deal with and made it all so easy, especially with all my last-minute requests and changes. Chloe was so lovely and helpful on the day and looked after us so well."

Sophie | September 2023

"I've worked with Jess and Bronson on 2 events at Abbeville Estate now and both have run perfectly. They are very organised and, importantly, flexible to change requirements on the day as needed."

Emma | August 2023

"Service was amazing from first response to enquiry through to the team on the day. The food was amazing, so many great comments from my team. Thank you!"

Esther | 18 July 2023

"The venue, service, and catering were all outstanding—first-class and extremely professional. I would like to thank Bronson, our Duty Manager especially. He was very personable, intelligent, attentive, and quietly made sure the event was managed smoothly and effortlessly. I highly recommend the venue in every way."

University of Auckland | May 2022



# Example Agenda Abbeville Estate



**8.30am**

Guests arrive onsite  
Tea and coffee service  
registration



**9.00am**

Meeting commences

**10.30am**

Morning tea served

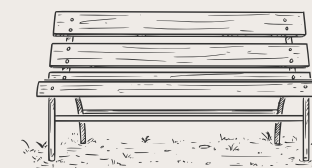


**11.00am**

Meeting resumes

**12.30pm**

Lunch break  
Enjoy our breakout room  
or some fresh air in our  
outdoor courtyard



**1.15pm**

Meetings resume

**3.00pm**

Afternoon tea is served



**3.45pm**

Meetings resume

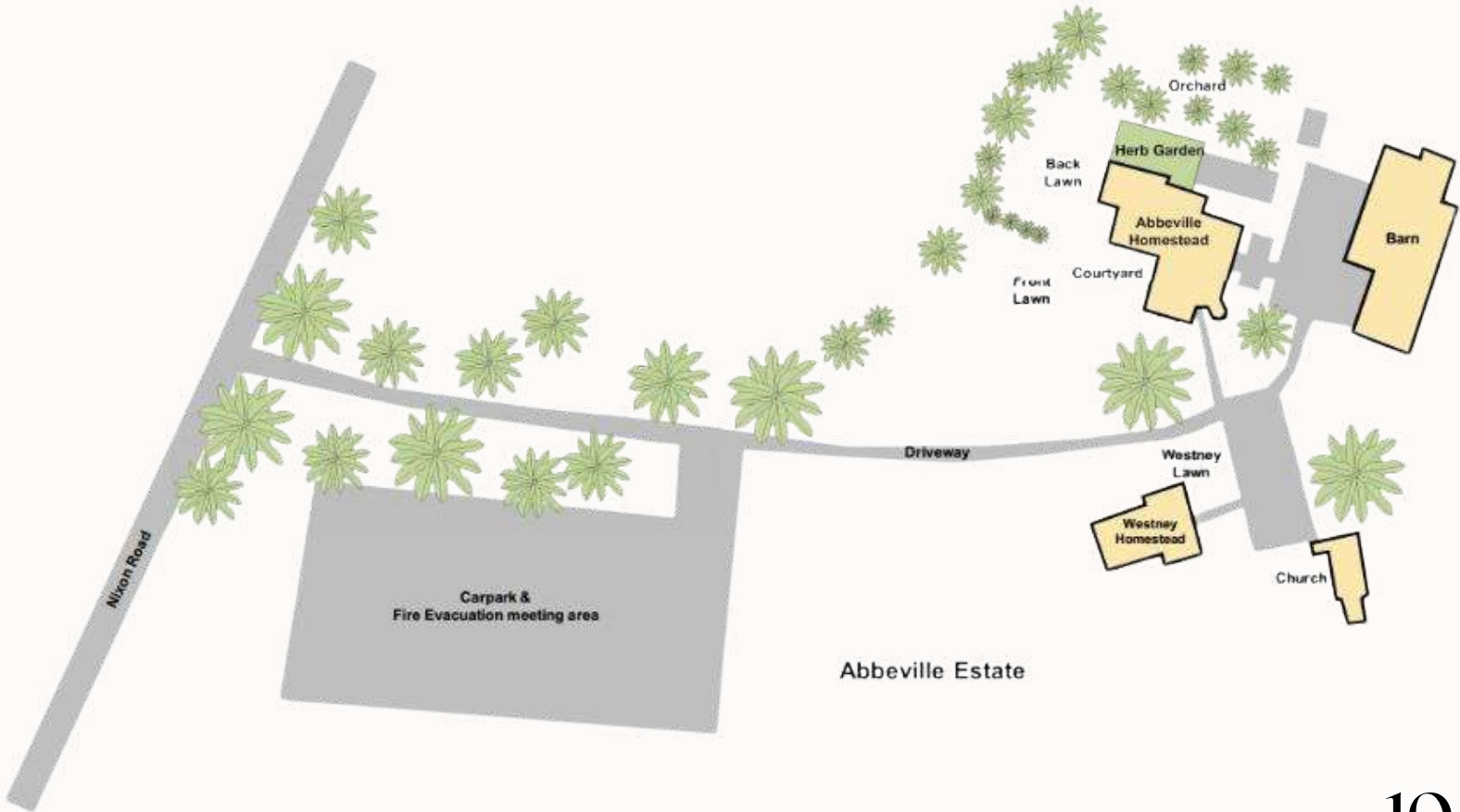
**5.00pm**

Meeting concludes  
Ask us about adding on  
some drinks and nibbles  
to wrap up a productive  
day!

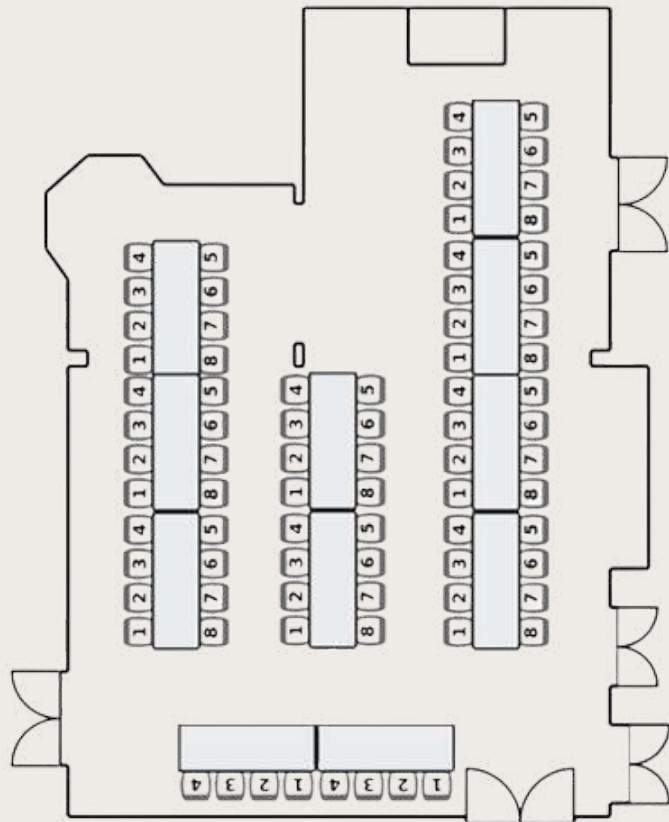


# Site & Homestead Layout

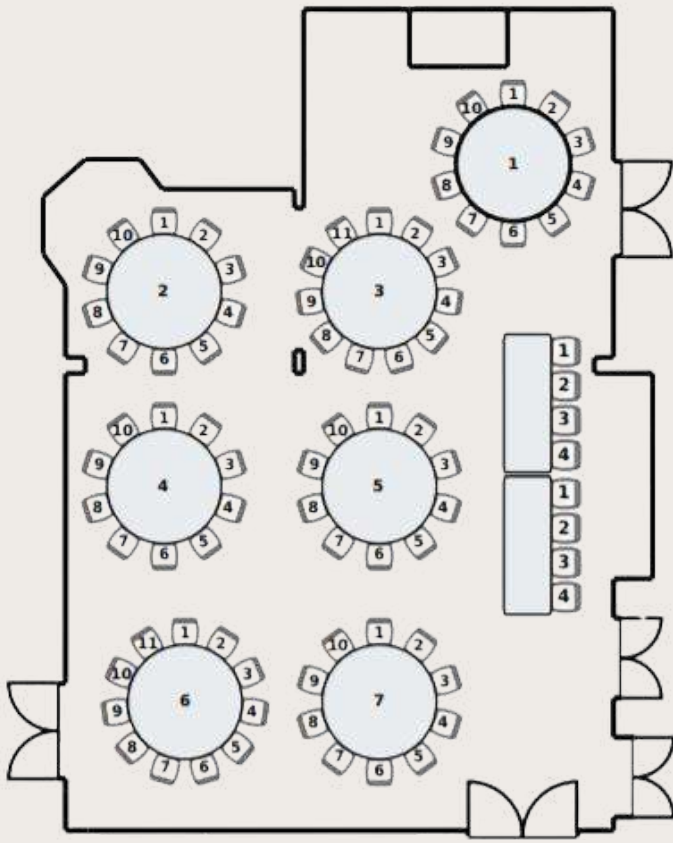
	Standing	Cabaret/ Round	Long Table	U-Shape	Theatre
<b>Homestead</b>	220	x	x	x	x
<b>Dining Room</b>	150	64	64	24	130
<b>Garden Room</b>	40	20	20	x	20
<b>Green Room</b>	10	x	x	x	15



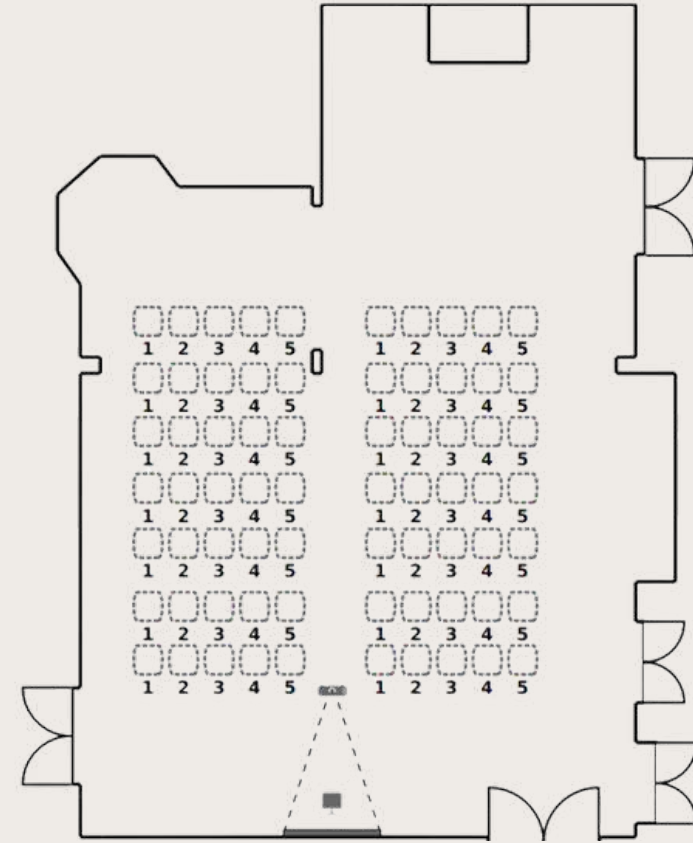
# Homestead Floor Examples



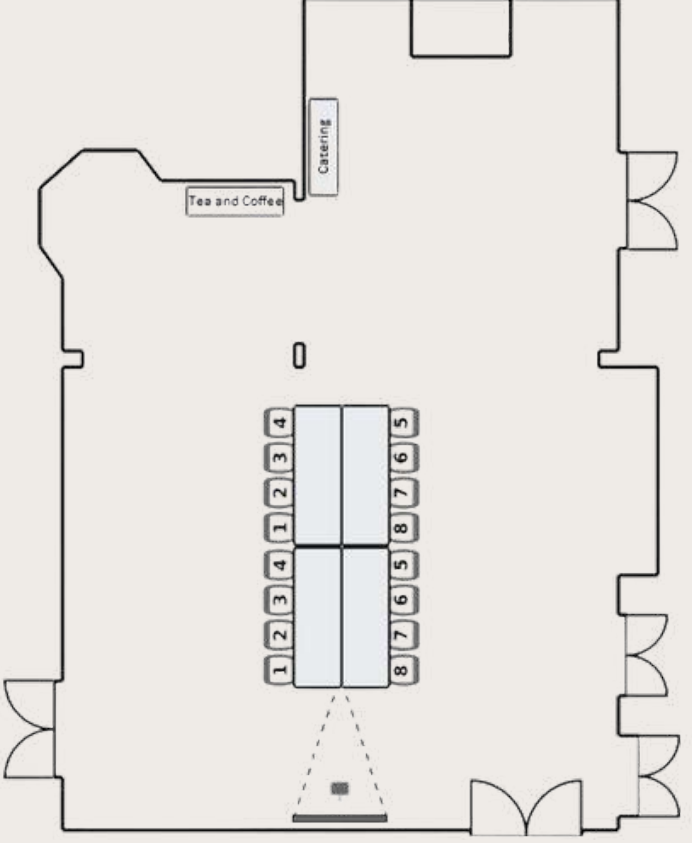
LONG TABLES



ROUND TABLES



THEATRE



BOARDROOM



# Contact

Telephone: +64 9 376 1424

E-mail:

[sales@greatcatering.co.nz](mailto:sales@greatcatering.co.nz)

[www.abbeville.co.nz](http://www.abbeville.co.nz)

9 Uenuku Way  
Auckland Airport Auckland,  
New Zealand